



**FLORIDA PUBLIC  
ARCHAEOLOGY NETWORK**  
**15-YEAR RETROSPECTIVE**

**2005-2020**



FLORIDA PUBLIC  
ARCHAEOLOGY  
NETWORK

A PROGRAM OF THE UNIVERSITY OF WEST FLORIDA

# TABLE OF CONTENTS

2005 - 2020

4	MESSAGE FROM THE EXECUTIVE DIRECTOR
6	FPAN: A BRIEF HISTORY
7	HOST INSTITUTIONS
8	FPAN COORDINATING CENTER
10	DESTINATION ARCHAEOLOGY RESOURCE CENTER
12	NORTHWEST REGION
14	NORTH CENTRAL REGION
16	NORTHEAST REGION
18	EAST CENTRAL REGION
20	CENTRAL REGION
22	WEST CENTRAL REGION
24	SOUTHWEST REGION
26	SOUTHEAST REGION
28	SIGNATURE PROGRAMS
30	CURRENT BOARD OF DIRECTORS
31	FORMER BOARD MEMBERS / STEERING COMMITTEE
32	FPAN STAFF
34	FORMER FPAN STAFF
35	ASSISTANTS AND INTERNS

FPAN

ALOOKBACK



## MESSAGE FROM THE EXECUTIVE DIRECTOR



**DR. WILLIAM LEES**  
EXECUTIVE DIRECTOR



This publication was planned early in 2020, before the world was swept with the COVID-19 pandemic and before social injustice was pushed to the forefront of the nation and world--again--after the unnecessary death of George Floyd in Minnesota. While the goal of these digital pages is to reflect on the first fifteen years of the Florida Public Archaeology Network, these events affect us now and how we move forward. We are committed to making changes that address, or are informed by, these tragic events. In February of this year staff gathered at our annual planning retreat, and we began to address social injustice that we saw in how we study and preserve the archaeological record. We are working now to focus and refine this early work, proposed as one of our strategic goals, in light of what we have all learned this spring. Likewise, necessary reaction to the pandemic has caused us to focus on remote programming, something that we envision will remain an essential part of our programming going forward.

WILLIAM LEES  
FLORIDA PUBLIC ARCHAEOLOGY NETWORK  
EXECUTIVE DIRECTOR

Public archaeology seeks to engage the general public with the archaeological remains of our past. In Florida, archaeological sites are often overlooked because many are buried or submerged. Each is a reminder of a human past stretching back thousands of years--and each contains a story that can only be heard through careful study.



Southeast Region staff and volunteers during investigations of the Bowles-Strachan House property.

Our goal is to work with local communities to preserve these archaeological places and their stories through public education about Florida archaeology and through active effort at sites long threatened by development and increasingly by climate.

# FPAN: A BRIEF HISTORY

## 2004

Legislation drafted to establish "Florida network of public archaeology centers" (Chapter 267.145, Florida Statutes).

## 2005

Memorandum of Agreement between Florida Department of State and University of West Florida for creation of FPAN signed.

## 2006

Charter Regional Centers established in St. Augustine (Northeast), Pine Island (Southwest), Tampa (West Central), and Pensacola (Northwest).

## 2007

FPAN Coordinating Center permanently moved to renovated L&N Marine Terminal in downtown Pensacola.

## 2007

Regional Centers established in Ft. Lauderdale (Southeast), Titusville (East Central), and Crystal River (Central).

## 2008

Destination Archaeology Resource Center opens in FPAN Coordinating Center.

## 2010

Regional Center established in Tallahassee (North Central).

## 2013

FPAN reorganizes Regional Centers to create administrative "Super Regions."

## 2015

FPAN receives Florida Trust for Historic Preservation "Outstanding Achievement in Preservation Education Award" for its CRPT program.

## 2015

FPAN receives "Daniel G. Roberts Award for Excellence in Public Historical Archaeology" from the Society for Historical Archaeology (SHA).

## 2018

UWF Division of Anthropology and Archaeology receives "Daniel G. Roberts Award for Excellence in Public Historical Archaeology" from SHA for Luna Project.

## 2019

West Central and Central Regional Centers host the Florida Anthropological Society's 71st Annual Meeting.

**Public archaeology has a long history in Florida. In many communities around the state, local archaeologists were pioneers in involving and engaging the public as sites were excavated and discoveries made. The idea for a state-wide program focused on public archaeological engagement was born from these examples in places such as Pensacola, Tampa, and St. Augustine. An initiative by Dr. Judy Bense at the University of West Florida (UWF) resulted in legislation providing for the creation of what is today the Florida Public Archaeology Network (FPAN).**

**Fifteen years ago, FPAN became a program of UWF with professionals stationed throughout Florida and serving every county. We are proud to assist the Florida Division of Historical Resources in our common goals of heritage education and preservation. Today, UWF works in partnership with the University of South Florida, Flagler College, and Florida Atlantic University to provide FPAN programming in eight regions.**



While FPAN is a program administered by the University of West Florida, programming in six of our eight Regional Centers is delivered by our partners at Flagler College, the University of South Florida, and Florida Atlantic University through annual, renewable contracts. Each of our eight Regional Centers was originally administered through individual partnering contracts; in 2013, FPAN consolidated administration with current hosts managing two regions each. Prior to this, our hosts also included, at various times, Brevard Community College, Florida Gulf Coast University, the Florida Historical Society, the Town of Fort Myers Beach, and the University of Florida Randell Research Center at Pine Island. They remain active and appreciated partners.

# HOST INSTITUTIONS

## COORDINATING CENTER

FPAN's Coordinating Center at the University of West Florida was first housed in the historic Christ Church Parish Schoolhouse in Pensacola's downtown historic district, managed by the University of West Florida Historic Trust. The Center moved to the historic 1903 Louisville & Nashville Railroad Marine Terminal, also part of the historic district, in 2006. The building houses administrative offices, offices for FPAN's Northwest Region, a Public Archaeology Lab, a classroom, and the Destination Archaeology Resource Center.

Located in historic downtown Pensacola, the Coordinating Center serves as a link between FPAN and the community. The volunteer Public Archaeology Lab provides opportunities for the public to engage with the processing of scientifically collected archaeological remains related to West Florida's robust prehistoric and historic past. The Destination Archaeology Resource Center connects the public with local accessible archaeological places and resources, as well as archaeological attractions in all of FPAN's eight regions statewide.



**Top left:** Signing of the FPAN Memorandum of Agreement on July 1, 2005. **Top right:** Members of the FPAN Board of Directors at FPAN's temporary home at the Christ Church Parish Schoolhouse building in historic downtown Pensacola in 2005. **Bottom:** Homeschool students explore the FPAN Coordinating Center's Public Archaeology Lab during one of many field trips throughout the year. **Opposite:** Summer campers from a joint summer camp program with UWF Explore Summer Camps, UWF Historic Trust, and FPAN explore the Coordinating Center's Destination Archaeology Resource Center.



First opened to the public in October 2008, the Destination Archeology Resource Center is a museum inside the FPAN Coordinating Center.

With displays, exhibits, and artifacts that highlight archaeological sites across the state, the Destination Archaeology Resource Center (DARC) has been free to the public six days a week since it first opened its doors. The original plan was to use volunteers and students to staff DARC; however, with the demand for changing exhibits and robust outreach, a professional Museum Manager was hired to oversee its operation. Currently, Museum Manager Mike Thomin supervises two part-time, paid museum assistants who are enrolled as graduate students in the University of West Florida's Departments of Anthropology and History. He also helped create the public radio program "Unearthed Florida" that broadcasts on WUWF 88.1. Since 2016, Mike Thomin has also helped facilitate and coordinate a two-year heritage tourism study of the region, followed by a National Heritage Area feasibility study for the area. Both were the first of their kind for Northwest Florida.

In addition to providing the local community with tours and field trip opportunities to the museum, DARC staff have developed, with local partners, hiking, biking, and kayaking tours to archaeological sites across the region. DARC staff have also produced a wide range of multimedia content over the past decade, from videos and photos, to online exhibits and interpretive waysides. DARC also provides public talks to museums, libraries, schools, and other civic groups, and it was the first FPAN entity to organize public archaeology talks inside local bars and restaurants. Temporary exhibits developed by DARC staff feature the research of UWF graduate students and faculty, which then travel across the state. From film screenings to "story time" programs, DARC continues to offer a wide range of archaeology opportunities for both adults and kids. DARC outreach programs further FPAN's mission, promote the museum, and develop it into a place that engages and inspires the community with public archaeology.



**Top left:** Hikers join Destination Archaeology Resource Center staff during a tour of Oak Tree Nature Park in Mary Esther. **Top right:** WUWF's Sandra Averhart and FPAN Founder Dr. Judy Bense recording an episode of *Unearthed Florida*, a short public radio program written by Destination Archaeology Resource Center Museum Manager Mike Thomin. **Middle right:** Visitors to the Destination Archaeology Resource Center explore the stratigraphy of a shell mound in one of the museum's exhibits. **Bottom:** Museum Manager Mike Thomin reads a book during an "Archaeology Story Time" program for K-2 students. **Opposite:** The main exhibit area of the Destination Archaeology Resource Center.

# DESTINATION ARCHAEOLOGY RESOURCE CENTER

# NORTHWEST REGION

Stretching across the Florida Panhandle, FPAN's Northwest Region includes a diversity of environments, cultures, and heritage sites. Gulf of Mexico beaches give way to large bays and rivers, bordered to the north by lush upland forests and rich farmland. The region boasts a substantial number of natural areas, including 21 state parks, five state aquatic preserves, three state forests, and a portion of Gulf Islands National Seashore. Archaeological sites spanning all periods of Florida's history, from precontact shell mounds to colonial settlements to industrial-era mills, dot the landscape.

Hosted by the University of West Florida (UWF), the Northwest Regional Center is located in Pensacola and shares offices with the FPAN Coordinating Center. Northwest Region staff works closely with Coordinating Center staff to offer a wide variety of outreach programs, training opportunities, and interpretation services to communities in the region's ten counties. To assist the UWF Archaeology Institute in rough sorting archaeological collections, the Region has welcomed volunteers to its popular Public Archaeology Lab since 2007. The Northwest Region also offers a full Graduate Student Assistantship to one incoming graduate student each year in partnership with the University of West Florida's Department of Anthropology.



When I started to volunteer at FPAN, the people here took me in and treated me like family. They have taught me so much about our little piece of paradise, Pensacola. It is truly an honor for me to work with so many amazing people.

*Dana Jackson, Public Archaeology Lab Volunteer*



**Top left:** Public Archaeologist Nicole Grinnan conducts a student program onboard the museum ship *Lettie G. Howard*. **Top right:** Former Outreach Coordinator Mary Furlong-Minkoff provides a tour of Naval Live Oaks in Gulf Islands National Seashore during the annual Boy Scout Archaeology Merit Badge Camp. **Middle left:** Long-time volunteer Dana Jackson in the FPAN Public Archaeology Lab. **Middle right:** FPAN staff with partners and participants after a successful Heritage Awareness Diving Seminar in Key West. **Bottom left:** Former graduate student assistant Gregg Harding supervises Milton High School Anthropology students during excavations at the Scott Site in Milton. **Bottom right:** Dr. William Lees and Dr. Della Scott-Ireton with the Blackwater Pirates following their receipt of the Stewards of Heritage Award from the Florida Archaeological Council in 2012. **Opposite:** Kayakers enjoy a history and archaeology tour of the Blackwater River.



**Top left:** Volunteers of all ages showed up to assist with the excavation of a historic structure in Orman House Historic State Park. **Top right:** Public Archaeologist Tristan Harrenstein cleans a historic marker at Tallahassee's Old City Cemetery during a CRPT workshop. **Bottom:** Participants complete the North Central Region's first HMS workshop at the Apalachicola National Estuarine Research Reserve. **Opposite:** A student works on her "Smash Pot," an activity that continues to be one of the Region's favorite activities to teach principles of archaeology to children.



## NORTH CENTRAL REGION

The North Central Region is host to both diverse ecological and cultural areas. The environment extends from the southern tip of the Appalachian foothills, to sand dunes and beaches along the Gulf Coast. The rich environmental diversity gives way to a variety of prehistoric and historic sites, ranging from historic Spanish forts to one of the largest prehistoric mounds in Florida. The region spans "The Big Bend" area, which includes the St. Marks National Wildlife Refuge and the Apalachicola National Forest, as well as numerous state forests and parks. In total, the North Central Region includes approximately 25 state parks, one national wildlife refuge, three designated trails, one national estuarine research reserve, two state forests, and numerous locally managed parks and nature trails. Many of the state and federal lands within the region are preserved not only for their natural resources, but also for the unique cultural resources they contain.

The North Central Regional Center, created in 2010, was first located at the historic Martin House office of the Florida Bureau of Archaeological Research (BAR) in Tallahassee. This enabled FPAN and BAR staff to partner directly on events such as boat recording workshops and Boy Scout Merit Badge Clinics. Since the summer of 2018, the Center has been located at Alfred B. Maclay Gardens State Park, creating opportunities to partner with the park on events, programs, and public interpretation projects. The Tallahassee location has become vital for FPAN in our effort to advocate for archaeology on a statewide level. For five years now, Archaeology Day at the Capitol has allowed FPAN and other heritage organizations to advocate for cultural resources during the state legislative session.



## NORTHEAST REGION

The Northeast Region is located along the First Coast, and it should be no surprise that the region claims some famous firsts for FPAN as well. The first FPAN Regional Center was awarded to Flagler College, which began hosting the Center in April 2006. Flagler College hired the first Regional Director, Sarah Miller, in May 2006, and the Network's first Outreach Coordinator (now termed Public Archaeologist), Christy Wood-Pritchard, in August 2006. The Center broke ground that August for rehabilitation of Markland Cottage, thanks to a Florida Department of State grant, and hosted its first Project Archaeology teacher training workshop that same day. One year later, the Center officially opened to the public.

The unique features that hold this region together are the St. Johns River, ancestral lands of the Timucua Indians, and the Spanish colonial capital of St. Augustine established in 1565. The region is an important part of the Gullah Geechee National Heritage Area, home to descendants of enslaved Africans brought to the British colonies in the 17th century with cultural presence across the south today. The region includes New Smyrna Beach and ruins of the Smyrna Settlement, the largest attempt by the British to colonize Florida with 1,400 indentured servants from the Mediterranean region, referred to as Menorcans today. The oldest standing structure in Florida, the Castillo de San Marcos, is an excellent symbol of the complexity of the region: built by the Spanish using Timucuan labor; transferred to the British and renamed Fort St. Mark after the Treaty of Paris; used to imprison Kiowa, Cheyenne, Arapaho, Comanche, and Caddo peoples during its tenure as Fort Marion in the late 19th century; and, today, one of the most visited heritage sites in the state. The Heritage Monitoring Scout (HMS Florida) program launched in St. Augustine in August 2016 blocks away from the Castillo, which is featured on the cover of the Union of Concerned Scientists publication on National Landmarks at Risk from climate change.



My FPAN internship made me realize the rewarding experience of educating adults and children about different subjects on archaeology, which I want to pursue in a museum career.

*Elizabeth Valhona, FPAN Intern*



**Top:** Participants in the Northeast Region's annual Archaeology Pub Crawl in front of the Castillo de San Marcos in downtown St. Augustine. **Middle left:** Regional Director Sarah Miller and former Outreach Coordinator Amber Grafft-Weiss get ready for a bicycle tour in front of the Regional Office at Flagler College. **Middle center:** Sarah Miller and Public Archaeologist Emily Jane Murray show off Heritage Monitoring Scouts (HMS Florida) gear during one of their first monitoring sessions at Shell Bluff Landing in the Guana Tolomato Matanzas National Estuarine Research Reserve. **Middle right:** Administrative Assistant Robbie Boggs leads a "Shipwreck on a Tarp" program for students in Palatka. **Bottom Left:** Emily Jane Murray works with St. Augustine Lighthouse Archaeological Maritime Program to document a beached shipwreck. **Bottom right:** Sarah Miller provides information to a video crew about an historic well at Flagler College.



**I thought I knew a lot of Florida History, but these talks have opened my eyes to how much I didn't know. As a native Floridian, it's been great to learn more, meet lots of interesting people also interested in Florida history, and meet the speakers. My husband loves the beer, but he loves the history too!**

*Florida Tales through Ales Program Participant*

## EAST CENTRAL REGION

The East Central Region, located along Florida's Space Coast, is a vibrant center for technology and advances in digital outreach. Public Archaeologist Kevin Gidusko was the longest-serving staff member for the Region and remained during the transfer of the Region from the Florida Historical Society to Flagler College. His interests in 3D technology and Space Coast heritage helped shape the high-tech outreach components the Center is still known for today. Emma Dietrich is currently the only full-time staff member living in the region. She has done a beautiful job transitioning her outreach skills to make use of existing 3D scanning tools, as well as in developing her own "Florida Tales Through Ales" program in partnership with Sanford's Wop Hops pub to feature a small-batch specialty beer paired with a lecture. She and Northeast Region Public Archaeologist Emily Jane Murray have transitioned many education and outreach opportunities from in-person to virtual during the COVID-19 pandemic, including their "Tea & Trowels" series on YouTube.

The East Central Regional Center was first established at Brevard Community College, then moved to the Florida Historical Society, before Flagler College began hosting it, first with an office in Merritt Island and now Sanford. Dr. Rachel Wentz launched the "In the Dirt" lecture series at Brevard Community College and brought the series to the Florida Historical Society when the Center moved. The Florida Historical Society partnership brought opportunities for the "Florida Frontiers" radio show and publishing opportunities. Windover is arguably the most significant site in the region, a mortuary pond with 7,000-year-old remains, now a National Historic Landmark owned by the Archaeological Conservancy.

**Top left:** Northeast Region Public Archaeologist Emily Jane Murray assists the East Central Region with documenting an eroding shell mound in Martin County.

**Top right:** Former Public Archaeologist Kevin Gidusko speaks to young people about archaeology at the annual Fort Christmas Living History Days event.

**Bottom left:** Public Archaeologist Emma Dietrich after a Cemetery Resource Protection Training (CRPT) workshop in a local historic cemetery.

**Bottom right:** Destination Archaeology Resource Center Museum Manager Mike Thomlin leads a talk for the East Central Region's "Florida Tales through Ales" program at Wops Hops in Sanford.



**Top left:** Central Region staff lead a "History Bike Gainesville" ride through historic African American neighborhoods of Gainesville. **Top right:** Central and West Central Region staff in a group photo after a successful HMS training at Crystal River Archaeological State Park. **Bottom left:** Public Archaeologist Nigel Rudolph sets up for an outreach event in Crystal River. **Bottom right:** Florida Bureau of Archaeological Research archaeologist Jason O'Donoghue speaks at an "Archaeology on Tap" program at First Magnitude Brewery in Gainesville.

## CENTRAL REGION

The Central Region today stretches through the southern half of Florida's Nature Coast from Levy to Hernando Counties. Moving from west to east across the region reveals salt marsh fringes and maritime hammocks of the Gulf Coastal Lowlands, through sandhill ridges to the swamps and uplands of Central Florida. Throughout the region, a unique geological characteristic is also evident, karst topography, which often exposes Florida's chert stone, known for its ease of tool manufacture and used extensively by the first Floridians. Farther inland, the eastern boundary of the region is defined by spring runs that feed the Oklawaha River. This meandering and cypress-lined waterway carves through the Ocala National Forest before connecting with the St. Johns River. To the north and northwest, the region circles through Alachua and Bradford Counties to again reach the Gulf Coast where a historic railroad line terminates at Cedar Key.

The highlight of the region, drawing visitors from across the globe, is the interconnected public lands showcasing an extensive biodiversity of plant and animal life. The natural areas also include several of Florida's ancient and storied archaeological sites and historic places. These locales mark the booms and busts of the Florida story. The Florida Park Service manages the Crystal River Archaeological State Park, a National Historic Landmark. The archaeology is set within a rich estuary consisting of a village made famous by the remains of over 900 years of indigenous American people's lives and architecture. The staff of FPAN's Central Regional Center has operated at Crystal River State Park since 2008.



## WEST CENTRAL REGION

Anchored by the extensive estuary systems of Tampa and Sarasota Bays, the West Central Region is home to Florida's largest and most diverse population along the Gulf Coast. Many residents are clustered in the metropolitan areas of Tampa and St. Petersburg, making the University of South Florida (USF) an ideal partner since FPAN's launch in 2005.

The region's natural shorelines are protected by a dark green blanket of mangroves. These "walking" trees, known for their prop roots, act as a nursery for the annual replenishing of marine life and resources. Inland, the region transitions from salt and brackish waters to seasonal wetlands and spring-fed creeks that create the Hillsborough, Manatee, Peace, and Myakka River systems. From these banks, pine and palmetto prairies stretch to the horizon of peninsular Florida's mostly flat landscape. At the region's eastern boundary, a north-south oriented spine of large hills form an abrupt change in topography. This limestone karst sandhill terrain, known as the Lake Wales Ridge, is a relic of Florida's time as an archipelago over two million years ago.

More recently, the Tampa Bay area has been the setting for thousands of years of indigenous American history continuing to the present day. The Seminole Tribe and their ancestors, such as the Tocobaga, along with other peoples going back thousands of years, left their mark on the land through their stories, place names, and remnants of their communities. Some of these memories are in the form of objects from activities including tool making and meal preparation, seafaring canoes, and community celebrations. Others are monumental feats of architecture like the shell mounds dotting the area. These special places, some now concealed by mangrove shorelines and modern streetscapes, allow FPAN to help tell the full history of the Tampa Bay area.



**Top:** Former Public Archaeologist Kassie Kemp delivers a briefing to Heritage Monitoring Scouts before visiting a nearby site. **Middle left:** Kassie Kemp listens to volunteers as they impart their observations about what a shell artifact's purpose may have been. **Middle center:** A student documents a gravestone, learning that cemeteries can be places of reverence and learning. **Middle right:** Junior archaeologists learn how to put math and drafting skills to work. **Bottom left:** Junior archaeologists learn archaeology in the field under the supervision of Regional staff. **Bottom right:** Regional partners History Bike Tampa share a Saturday to learn about archaeological remains of Fort Brooke in downtown Tampa.



# SOUTHWEST REGION

Consisting of five counties, FPAN's Southwest Region has a population of over one million people. This area reflects the diversity and beauty of Florida's wildlife, extending from spectacular beaches on the Gulf coast through the Ten Thousand Islands in the south, up to the Everglades in the northeastern area of the region.

Over the past 15 years, the Southwest Region has been hosted by several entities that have subsequently become trusted partners, including Mound House and Florida Gulf Coast University. In 2014, the Southwest Region found a permanent home with Florida Atlantic University, recognized for its ethnic diversity on campus. The rich legacy of archaeological work in southwest Florida ensures the success of public outreach and education programs and staff have assisted University of Georgia and University of Florida at world-class research sites like Pineland at the Randell Research Center and Mound Key. The Southwest Region also has successful partnerships with state, federal, and tribal agencies, including the National Park Service and the Seminole Tribe of Florida. The Region has emerged as a leader in assessing the impact of climate change and cultural heritage, working with local universities to raise awareness of the impact of climate change on historic and archaeological sites.

Southwest Region staff demonstrate their investment in this area through close collaboration with local partners, working to engage long-term local residents and snowbird populations alike and linking to a long history of human use and occupation.



Excellent resources for all! In this time of staying home and saving lives, all of our online resources are so very important... I am so glad to have the online access to learning and thank you very much for all that you do. FPAN is awesome!

*FPAN Southwest Facebook Fan*

**Top left:** Regional Director Sara Ayers-Rigsby (left), Public Archaeologist Mallory Fenn (middle), and Public Archaeologist Rachael Kangas (right) during Archaeology Advocacy Day at the Florida State Capitol in Tallahassee. **Top right:** Public Archaeology Assistant Victoria Lincoln helps out during excavations at Pineland at the Randall Research Center. **Middle left:** HMS Florida volunteers document an eroding site shell midden at Calusa Island. **Middle right:** Rachael Kangas documents a site damaged after Hurricane Irma in 2017. **Bottom left:** Rachael Kangas helps monitor a shipwreck in the Florida Keys during a Submerged Heritage Monitor Scouts program with Florida Keys National Marine Sanctuary partners. **Bottom right:** Rachael Kangas assists during excavations for Florida Gulf Coast University's field school. **Opposite:** Attendees of the 2019 CRPT Conference.

# SOUTHEAST REGION

Home to almost one-third of Florida's population, the Southeast Region consists of Palm Beach, Broward, Miami-Dade, and Monroe Counties. Geographically, this region extends from the worldwide tourist attraction of Key West, through the international city of Miami, to the sugarcane fields of western Palm Beach County. The archaeology of the area reflects nearly ten thousand years of occupation and use. While many residents and visitors are unaware of the significant archaeological resources in their region, FPAN's Southeast Region has been working tirelessly to change that.

The Southeast Region is hosted by Florida Atlantic University, a diverse university that reflects a diverse region. One signature program for FPAN's Southeast Region is Archaeobootcamp, a week-long adventure in collaboration with the Bureau of Land Management where college students from across the country spend a week at the Jupiter Inlet Lighthouse Outstanding Natural Area learning about archaeological methodology and the history of the region. The Southeast Region has also worked with local governments and municipalities to improve existing archaeological exhibits and create new ones. Over the last 15 years, the Region has worked with the City of Miami Lakes on the display inside their government offices, the City of Fort Lauderdale for the exhibit "Life Along the New River," and most recently with Miami-Dade County on updating their exhibit at Arch Creek Park.

FPAN's Southeast Region has received various awards, including Appreciation Awards from both Broward and Palm Beach Counties, and more recently Educational Partner of the Year from the Deering Estate in 2018. Working with local communities to raise awareness of the history of loss, migration, climate change, and resiliency, the Southeast Region empowers residents to engage with their past.



**Top:** Regional staff work with students from across the United States during the first "Archaeobootcamp" at the Jupiter Inlet Lighthouse Outstanding Natural Area. **Middle left:** Participants at a CRPT workshop in Key West clean grave markers after learning proper methods. **Middle center:** Regional staff visit the Pompano Beach Mound to document damage after 2017's Hurricane Irma. **Middle right:** Public Archaeologist Mallory Fenn helps young students learn about archaeology during a KidVision television show. **Bottom left:** Regional staff take 3D photographs during a visit to Big Mound City in the J.W. Corbett Wildlife Management Area. **Bottom right:** Mallory Fenn assists during excavations with Palm Beach County Archaeology at the Wedgworth Site.

# SIGNATURE PROGRAMS



# BOARD OF DIRECTORS



**CHAIR**  
**DR. JUDITH A. BENSE**  
Director Representing UWF



**VICE-CHAIR**  
**DR. GREGORY C. COOK**  
Director Representing UWF



**MARION ALMY**  
Director at Large, In-State



**DR. ELIZABETH BENCHLEY**  
Staff Advisor to the Board



**ADRIENNE BURKE**  
Director at Large, Representing the Lay Public



**CHRISTIAN DAVENPORT**  
Director at Large, In-State



**DR. RAMIE GOUGEON**  
Director Representing the Florida Archaeological Council



**DR. WILLIAM LEES**  
Executive Officer and Secretary to the Board



**DR. JEFFREY MITCHEM**  
Director at Large, Out-of-State



**DR. TIMOTHY PARSONS**  
*ex officio* Director as Interim State Archaeologist



**DR. MATTHEW REEVES**  
Director at Large, Out-of-State



**DR. JASON WENZEL**  
Director Representing the Florida Anthropological Society



**DR. JOHN WORTH**  
Director Representing UWF



**DR. HESTER DAVIS**  
Director emeritus  
1930-2014

# STEERING COMMITTEE



The FPAN Steering Committee. **Front row, left to right:** Bob Carr, Hester Davis, Elizabeth Benchley, Lynne Goldstein, Marion Almy, Brent Weisman. **Back row, left to right:** Gregory Cook, Ryan Wheeler, Sheila Stewart, Judy Bense, Jim Miller, Bill Marquardt, and Thomas Eubanks.

After legislation was passed authorizing creation of FPAN, the University of West Florida assembled a steering committee to draft the called-for Memorandum of Agreement between UWF and the Florida Division of Historical Resources. Funded by UWF, this committee met several times in Pensacola and prepared a document that outlined a blueprint for how FPAN would operate and deliver its program. After the legislative funding of FPAN and signing of the MOA on July 1, 2005, the steering committee was transitioned to an advisory Board of Directors which provides essential guidance to this day.

# FORMER BOARD MEMBERS

**BOB CARR**  
Served 2006-2008

**PATTY FLYNN-DAVIES**  
Served 2009-2018

**DR. MARY GLOWACKI**  
Served 2011-2020

**DR. LYNNE GOLDSTEIN**  
Served 2006-2017

**NORMA HARRIS**  
Served 2006-2012

**LEE HUTCHINSON**  
Served 2009-2018

**PAUL JONES**  
Served 2007-2015

**DR. TERRY KLEIN**  
Served 2008-2018

**DR. JIM MILLER**  
Served 2006-2008

**DR. ROBIN MOORE**  
Served 2008-2012

**ROBIN (SHORTY) ROBBINS**  
Served 2011-2017

**SHEILA STEWART**  
Served 2006-2009

**DR. RYAN WHEELER**  
Served 2006-2011

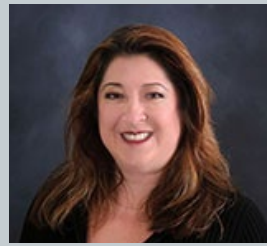


# FPAN STAFF

## COORDINATING CENTER



**DR. WILLIAM LEES**  
Executive Director



**DR. DELLA SCOTT-IRETON**  
Associate Director



**MIKE THOMIN, M.A.**  
Destination Archaeology  
Resource Center Manager

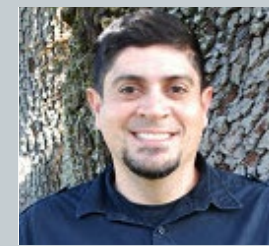


**MARI THORNTON**  
Office and Contracts Manager

## CENTRAL AND WEST CENTRAL REGIONAL CENTERS



**JEFF MOATES, M.A.**  
Regional Director



**NIGEL RUDOLPH**  
Central Region  
Public Archaeologist



**REBECCA O'SULLIVAN, M.A.**  
West Central Region  
Public Archaeologist



**CAITLYN JOHNSON**  
Central Region  
Public Archaeology Assistant

## NORTHEAST AND EAST CENTRAL REGIONAL CENTERS



**SARAH MILLER, M.A.**  
Regional Director



**EMILY JANE MURRAY, M.A.**  
Northeast Region  
Public Archaeologist



**EMILY "EMMA" DIETRICH**  
East Central Region  
Public Archaeologist



**ROBBIE BOGGS**  
Office Manager



**PATRISHA MEYERS-GIDUSKO, M.A.**  
HMS Florida, Project Manager

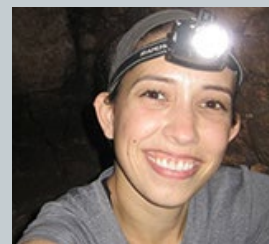


**KASSIE KEMP, M.A.**  
HMS Florida, Database Manager

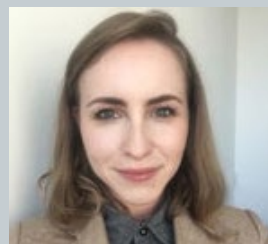
## SOUTHWEST AND SOUTHEAST REGIONAL CENTERS



**SARA AYERS-RIGSBY, M.A.**  
Regional Director



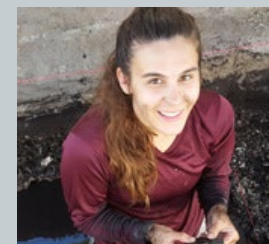
**RACHEL KANGAS, M.A.**  
Southwest Region  
Public Archaeologist



**MALLORY FENN**  
Southeast Region  
Public Archaeologist

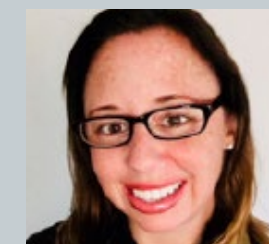


**MICHELINE HILPERT**  
Administrative Assistant



**VICTORIA LINCOLN**  
Southwest Region  
Public Archaeology Assistant

## NORTHWEST AND NORTH CENTRAL REGIONAL CENTERS



**BARBARA CLARK, M.A.**  
Regional Director



**NICOLE GRINNAN, M.A.**  
Northwest Region  
Public Archaeologist



**TRISTAN HARRENSTEIN, M.A.**  
North Central Region  
Public Archaeologist

## FORMER FPAN STAFF

### COORDINATING CENTER

**MONICA BECK, M.A.**  
Museum Archaeologist, 2008-2009

**BERNITA BRYANT**  
Office and Contracts Manager, 2018

**JULIANNE BYRD**  
Office and Contracts Manager, 2017

**DR. LAURA CLARK**  
Post-doctoral Research Associate, 2016-2018

**JASON KENT**  
Web Technician, 2010-2016

**DR. SORNA KHAKZAD**  
Post-doctoral Research Associate, 2016-2018

**DR. AMY MITCHELL-COOK**  
Research Associate, 2005-2007

**SARAH NOHE, M.A.**  
Associate Director, Development, 2016-2017

**CHERYL PHELPS**  
Office and Contracts Manager, 2006-2017

**NORTHWEST REGION**

**DR. MARY FURLONG-MINKOFF**  
Outreach Coordinator, 2006-2009

**IRINA SORSET, M.A.**  
Outreach Coordinator, 2007-2012

**NORTHEAST REGION**

**RYAN HARKE, M.A.**  
Outreach Coordinator, 2013-2015

**AMBER GRAFFT-WEISS, M.A.**  
Outreach Coordinator, 2008-2013

**CHRISTY WOOD-PRITCHARD, M.A.**  
Outreach Coordinator, 2006-2008

### EAST CENTRAL REGION

**DR. TIM BROCK**  
Outreach Coordinator, 2007-2009

**KEVIN GIDUSKO, M.A.**  
Outreach Coordinator, 2012-2017

**GREGG HARDING, M.A.**  
Outreach Coordinator, 2009-2012

**NATHAN LAWRES**  
Outreach Coordinator, 2009

**DR. RACHEL WENTZ**  
Regional Director, 2008-2013

### CENTRAL REGION

**DR. RICHARD ESTABROOK**  
Regional Director, 2008-2012

**LISA HYLTON**  
Outreach Coordinator, 2014-2015

**JASON MOSER, M.A.**  
Outreach Coordinator, 2011-2014

**NICOLE TUMBLESON-MORRIS, M.A.**  
Outreach Coordinator, 2008-2011

### WEST CENTRAL REGION

**DR. RICHARD ESTABROOK**  
Regional Director, 2006-2008

**RAE HARPER**  
Outreach Coordinator, 2006-2012

### SOUTHWEST REGION

**STEVE ARCHER, M.A.**  
Regional Director, 2009-2010

**JOEY BELANGER**  
Outreach Specialist, 2013

**KARA BRIDGEMAN-SWEENEY, M.A.**  
Regional Director, 2006-2008

**MARY BUTTREY**  
Administrative Assistant, 2013

**REGAN DOHERTY**  
Outreach Assistant, 2015

**JESSICA MENDES**  
Outreach Assistant, 2012-2013

**MATTHEW SCHULD**  
Regional Director, 2010-2011

**DR. ANNETTE SNAPP**  
Regional Director, 2011-2013

**MELISSA TIMO, M.A.**  
Outreach Coordinator, 2012-2015

**DR. MICHELE WILLIAMS**  
Regional Director, 2013-2015

### SOUTHEAST REGION

**DR. KIRA KAUFMAN**  
Maritime Archaeologist, 2007-2008

**SARAH NOHE, M.A.**  
Outreach Coordinator and  
Acting Regional Director, 2009-2016

**BARBARA SAVAGE, M.A.**  
Administrative Assistant, 2007-2008

**DR. MICHELE WILLIAMS**  
Regional Director, 2007-2015

## ASSISTANTS AND INTERNS

**WHITNEY ANDERSON**  
NW Graduate Assistant, 2010-2011

**MEGAN ASHBROOK**  
NW Graduate Assistant, 2019-present

**COLIN BEAN**  
NW Graduate Assistant, 2012

**SARAH BENNETT, M.A.**  
NE Outreach Assistant

**JAY BIXLER**  
NW Graduate Assistant, 2009-2012

**COURTNEY BOREN**  
NW Graduate Assistant, 2019-present

**AUSTIN BURKHARD**  
NW Graduate Assistant, 2018-2019

**KIRBY CALHOUN**  
NW Intern, 2019

**ROSALIE COCCI**  
NE Outreach Assistant

**ALEXANDRIA COMPTON**  
NW Intern, 2019

**VIRGINIA CONAWAY**  
NW Graduate Assistant, 2018-2019

**ADAM CRIPPS**  
NE Intern

**COURTNEY CRUM**  
NE Intern

**CAITLIN DELMAS**  
NC Intern, 2019

**EMILY "EMMA" DIETRICH**  
NW Graduate Assistant, 2015-2018

**JESSICA DODD**  
NE Intern

**MICHELLE D'ONOFRIO**  
NW Graduate Assistant, 2010

**AMELIA EASTERLING**  
NW Graduate Assistant, 2008-2010

**ROBBY ELMORE**  
NW Graduate Assistant, 2020

**MICHAEL FAZIO**  
NW Graduate Assistant, 2015-2016

**ELAINE FOSTER, M.A.**  
NW Graduate Assistant, 2018

**TARA GIULIANO, M.A.**  
NW Graduate Assistant, 2009-2012

**JOSEPH GRINNAN, M.A.**  
NW Graduate Assistant, 2012-2013

**NICOLE GRINNAN, M.A.**  
NW Graduate Assistant, 2010-2013

**GREGG HARDING, M.A.**  
NW Graduate Assistant, 2012-2015

**TRISTAN HARRNSTEIN, M.A.**  
NW Graduate Assistant, 2011-2015

**ZACH HARRIS**  
NW Graduate Assistant, 2014-2018

**KAD HENDERSON**  
NW Graduate Assistant, 2008-2014

**JESS HENDRIX, M.A.**  
NW Graduate Assistant, 2012-2017

**SHANAE HILL**  
NE Intern

**RACHEL HINES, M.A.**  
NW Graduate Assistant, 2017-2020

**HARROLD "PINKY" HOOD**  
NE Intern

**BRENT HUNTER**  
NW Intern, 2019

**LARRY JAMES, M.A.**  
NW Graduate Assistant, 2007-2008

**JANENE JOHNSTON, M.A.**  
NW Graduate Assistant, 2013-2018

**KELANI JORDAN**  
NW Graduate Assistant, 2015-2020

**STEWART KAMINER**  
NW Intern, 2019

**RACHAEL KANGAS, M.A.**  
EC Outreach Assistant

**JENNIFER KNUTSON, M.A.**  
NE Outreach Assistant

**JOHN KREBS**  
NW Graduate Assistant, 2010

**MEGAN LIEBOLD**  
NE Outreach Assistant

**ANDRIAN LORD**  
NW Federal Work Study Assistant, 2016-2017

**WHITNEY LYTLE**  
NW Information Specialist, 2007

**BRIAN MABELITINI, M.A.**  
NW Graduate Assistant, 2009-2012

**TAYLOR MACFARLANE**  
NW Intern, 2019

**ASHLEY (MOEN) MILLER**  
NE Assistant

**MELISSA MORRIS**  
NW Graduate Assistant, 2006-2007

**WILLIAM NEAL**  
NW Graduate Assistant, 2012-2013

**DEAN NONES, M.A.**  
NW Graduate Assistant, 2008-2012

**BRIANNA PATTERSON, M.A.**  
NW Graduate Assistant, 2015-2019

**DANA PULZ**  
NW Intern, 2018

**JEFFERY ROBINSON**  
EC Outreach Assistant  
NW Graduate Assistant, 2018-present

**KAITLYN SAWYER**  
EC Outreach Assistant

**KELLY SEARS**  
NW Federal Work Study Assistant, 2018-2020

**JACOB SHIDNER, M.A.**  
NW Graduate Assistant, 2008

**KATHERINE SIMS, M.A.**  
NW Graduate Assistant, 2014-2018

**PAUL SJORDAL, M.A.**  
NW Graduate Assistant, 2007

**TYLER SMITH, M.A.**  
NW Program Assistant, 2017-2018

**SEAN TAYLOR**  
NW Federal Work Study Assistant, 2013

**MELISSA TIMO, M.A.**  
NW Graduate Assistant, 2008-2011

**ELISHA TISDALE**  
EC Outreach Assistant

**NICOLE TUMBLESON-MORRIS, M.A.**  
NW Graduate Assistant, 2007

**JAKIA TURNER**  
NW Intern, 2020

**DAVID UNDERWOOD**  
NC Intern

**MIRANDA VAN ZYL**  
NE Intern

**JACOB VERDA**  
NW Intern, 2019

**TONI WALLACE**  
NE Assistant

**MORGAN WAMPLER, M.A.**  
NW Graduate Assistant, 2010

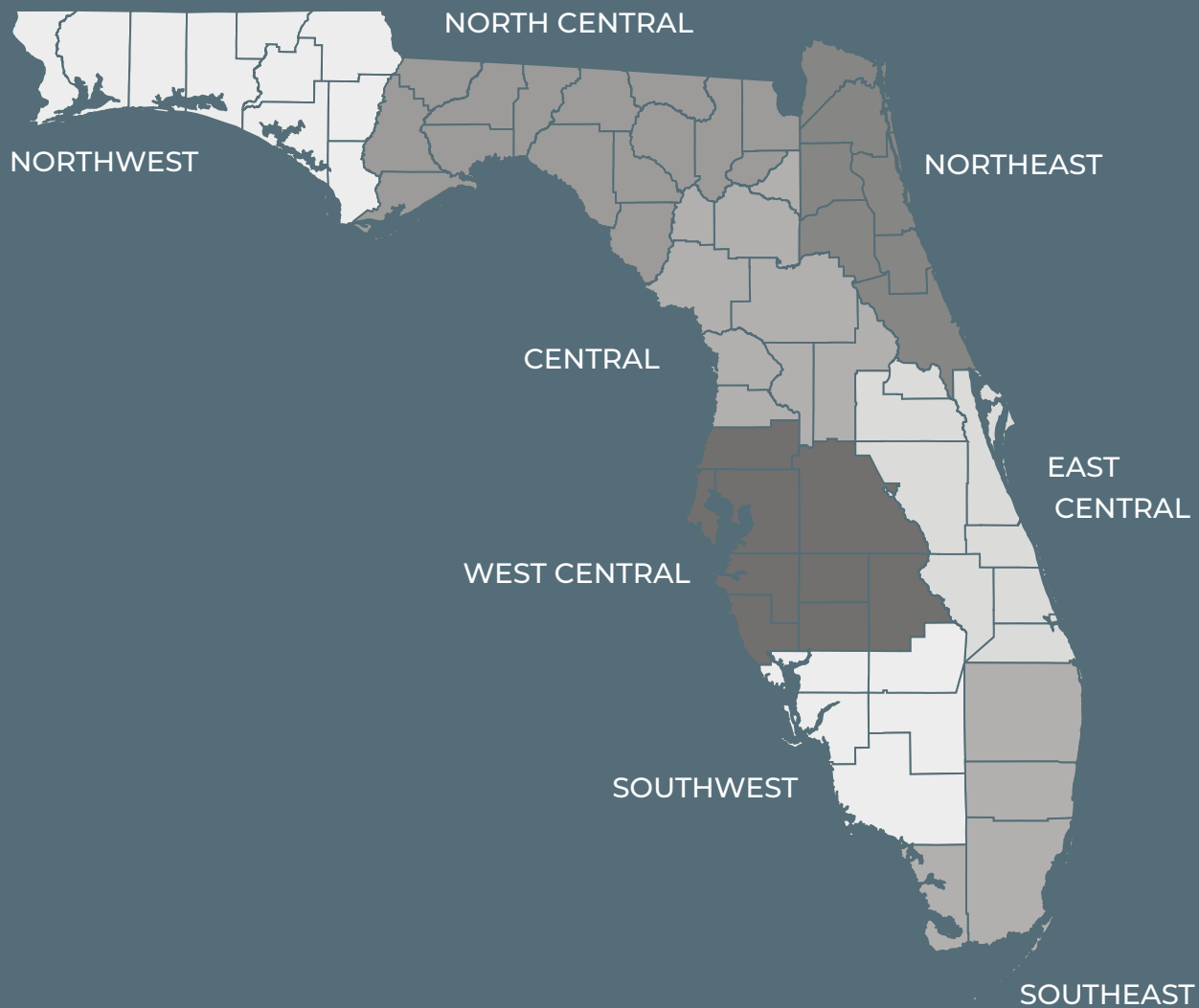
**ANN WILKINSON**  
NW Assistant Archaeologist, 2010

**SETH WILLOUGHBY**  
EC Intern

**ALLEN WILSON, M.A.**  
NW Graduate Assistant, 2010-2014


**MARISSA YOUNG**  
NW Intern, 2019





## FLORIDA PUBLIC ARCHAEOLOGY NETWORK 15-YEAR RETROSPECTIVE

 FLORIDA PUBLIC ARCHAEOLOGY NETWORK, 207 E MAIN STREET, PENSACOLA, FLORIDA 32502

 850 595 0050

 INFO@FPAN.US

 FPAN.US